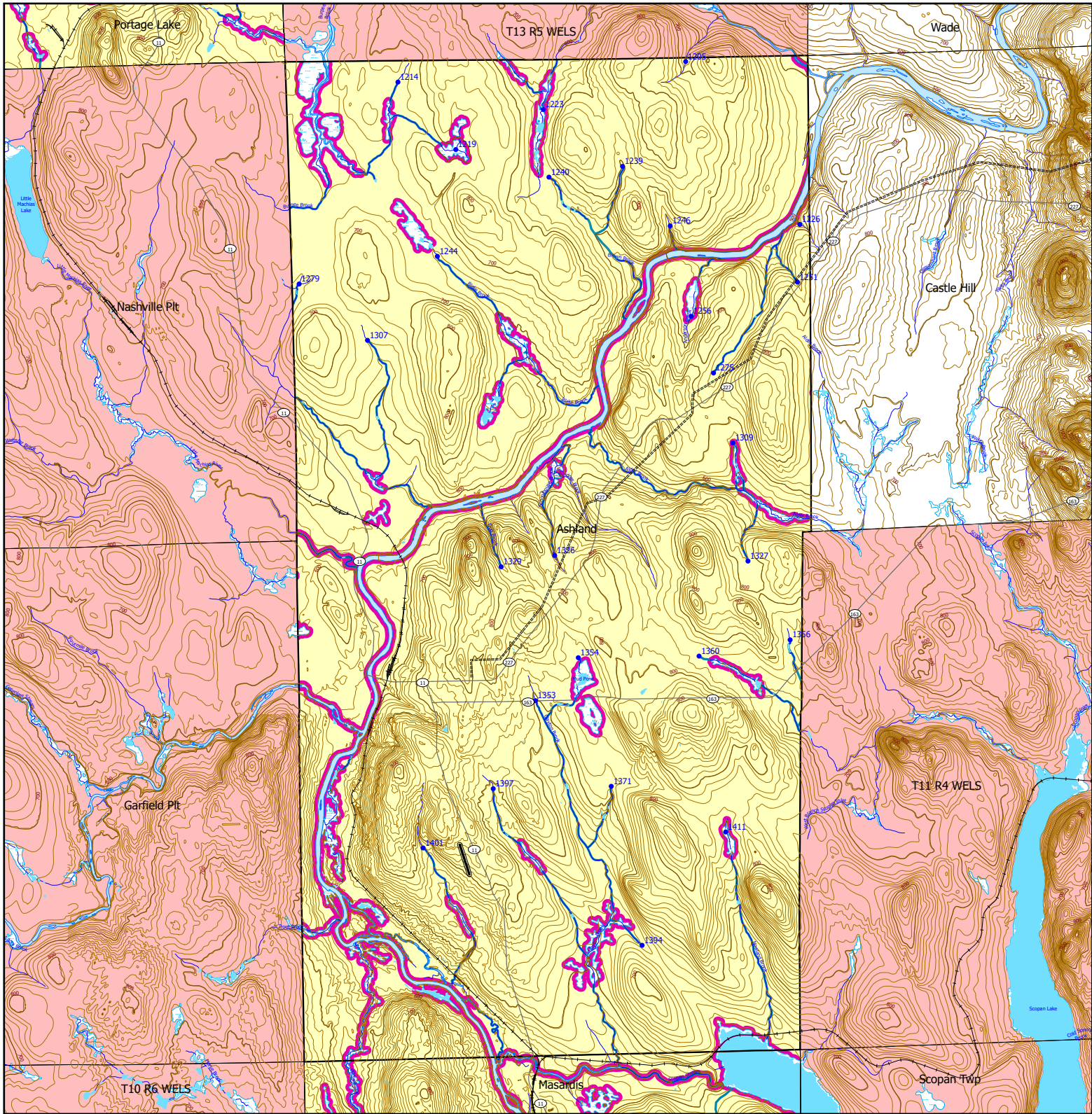


# Forest Operation Notification & Shoreland Area\* Map



This map is **ADVISORY**, for planning purposes only. Actual ground conditions and water body locations determine where and how MFS timber harvesting rules apply. Contact the MFS for additional information/assistance from a MFS Forester.

## Forest Operation Notification & Shoreland Area\* Map Ashland

Adoption Date  
3/21/2023

Department of Agriculture, Conservation and Forestry  
Maine Forest Service

### Maine Forest Service



For additional information, please contact the MFS at:  
1-207-287-2791 or 1-800-367-0223 (in-State)

Email us at: [forestinfo@maine.gov](mailto:forestinfo@maine.gov)



or on the web at: [www.maineforestservice.gov](http://www.maineforestservice.gov)






#### Drainage Points

-  1234 300 Acre Drainage Point (start of the 75ft buffer)  
1234 - ID Number (location info)
-  56 25 Square Mile Drainage Point (start of the 250 ft buffer)  
56 - ID Number (location info)

#### Wetlands

-  Non-forested Wetlands Greater Than 10 acres (Lacustrine, Palustrine)
-  Emergent or Marine Wetland

#### Buffers

-  250 Foot Buffer Zones
-  75 Foot Buffer Zones
-  Shoreline Integrity - Streams draining less than 300 acres, ponds and non-forested wetlands greater than 0.1 acres and less than 10 acres

May 2026



SWS Town



FON Town

Statewide Standard Rules do not apply (Town/DEP Standards apply)



LUPC - Unorganized or Deorganized Town



Outside Maine



\*See MFS Rule - Chapter 21 for additional information.