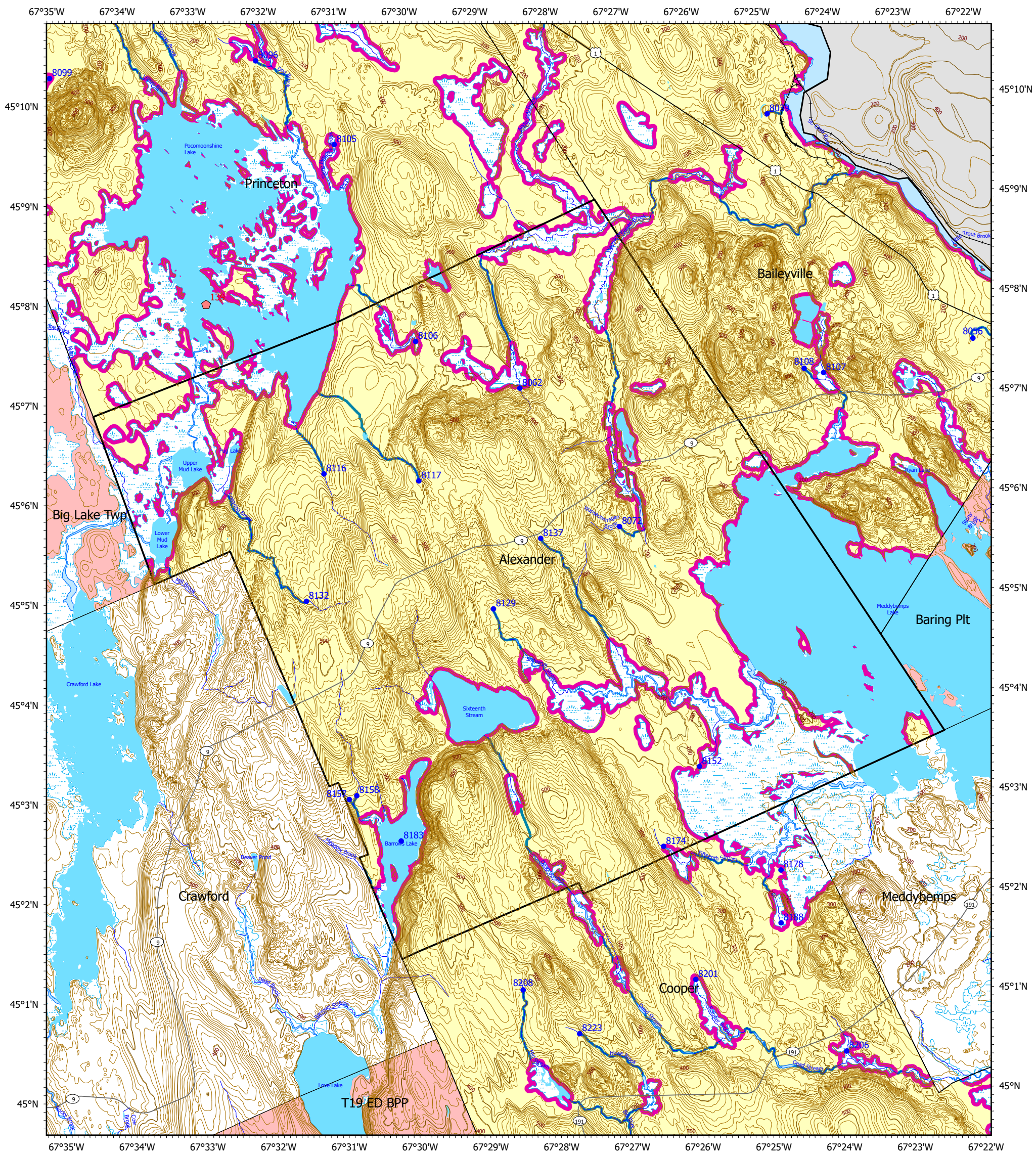


Statewide Standards for Timber Harvesting in the Shoreland Area* Map



This map is **ADVISORY**, for planning purposes only. Actual ground conditions and water body locations determine where and how MFS timber harvesting rules apply. Contact the MFS for additional information/assistance from a MFS Forester.

Forest Operation Notification & Shoreland Area* Map

Adoption Date
6/15/2010

Alexander

<p>Wetlands</p> <ul style="list-style-type: none"> Non-forested Wetlands Greater Than 10 acres (Lacustrine, Palustrine) Emergent or Marine Wetland 	<p>Drainage Points</p> <ul style="list-style-type: none"> 1234 300 Acre Drainage Point (start of the 75ft buffer) 1234 - ID Number (location info) 56 25 Square Mile Drainage Point (start of the 250 ft buffer) 56 - ID Number (location info) 	<p>Buffers</p> <ul style="list-style-type: none"> 250 Foot Buffer Zones <ul style="list-style-type: none"> Great Ponds Non-forested Wetlands greater than 10 acres Rivers below the 25 square mile drainage point Coastal wetlands Tidal Waters 75 Foot Buffer Zones <ul style="list-style-type: none"> Streams between the 300 acre drainage point and the 25 square mile drainage point Shoreline Integrity - Streams draining less than 300 acres, ponds and non-forested wetlands greater than 0.1 acres and less than 10 acres 	<p>Locator Map</p> <p>■ SWS Town</p>	
<p>Department of Agriculture, Conservation and Forestry Maine Forest Service</p> <p>Maine Forest Service</p> <p>For additional information, please contact the MFS at: 1-207-287-2791 or 1-800-367-0223 (in-State)</p> <p>Email us at: forestinfo@maine.gov or on the web at: www.maineforestservice.gov</p>	<p>SWS Town</p>	<p>FON Town Statewide Standard Rules do not apply (Town/DEP Standards apply)</p>	<p>LUPC - Unorganized or Deorganized Town</p>	<p>Outside Maine</p>
<p>June 2026</p> <p>1 0.5 0 1 2 Miles</p>				

*See MFS Rule - Chapter 21 for additional information.
Greg T.Miller D:\MFS\gis_data\GWS_aromap\GWS Town Final Map 11x17\GWS Town Final Map 11x17.aprx